

Modus 1

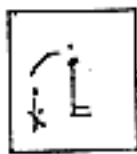


(8va)

(8va)

A/E₅

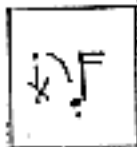
1



Moduszeichen

b/E₊

4



(8va)

(8va)



Modus 4

Variationen 1

„Refrain“

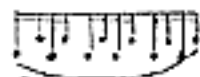
Variationszeichen



a) Wechsel weite ↔ enge Lage

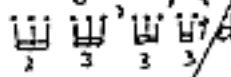


b) Wechsel piano ↔ forte



c) Wechsel mehrtönig ↔ eintönig

col legno batt./ohne



d) Wechsel der Spieltechnik
ord. ↔ non ord.

Modus 2



1 4 2 3
4 3 1 2
2 1 3 4
3 2 4 1
pp

! ca. 72 MM

(8va)

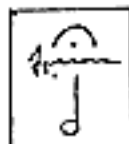
(8va)

Moduszeichen



2

C/D +



3

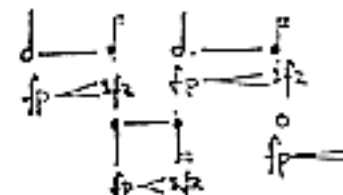
H/f

(8va)

(8va)



2 1 3 4
1 4 2 3
3 2 4 1
4 3 1 2



! ca. 86 MM

Modus 3